

## THREE PIECE BALL VALVES M3S1

### DESCRIPTION

The M3S1 three piece ball valves are full bore isolating valves designed for on/off applications with steam, condensate and other gases and liquids compatible with the construction.

### MAIN FEATURES

Full bore floating ball design.  
Can be serviced without removal from pipeline.  
Bidirectional.  
Blow-out proof stem design.  
Antistatic device.

**OPTIONS:** Different sealing materials.  
Fire safe design.

**USE:** Steam, gases and liquids compatible with the construction.

**AVAILABLE MODELS:** M3S1 – zinc plated carbon steel.

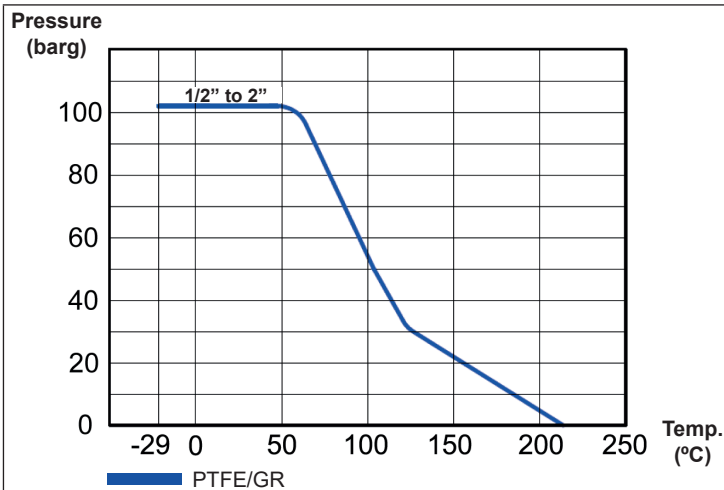
**SIZES:** 1/2" to 2".

**CONNECTIONS:** Female threaded ISO 7 Rp or NPT.  
Socket weld (SW) ASME B16.11.  
Butt weld (BW) ASME B16.25.

**INSTALLATION:** See IMI – Installation and maintenance instructions.

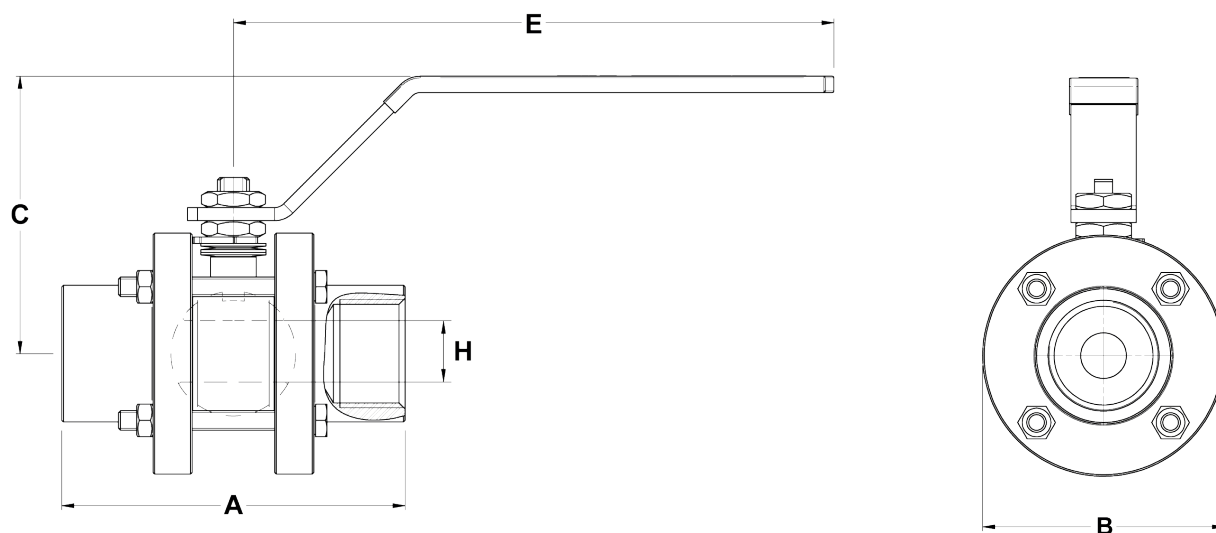


### BODY LIMITING CONDITIONS



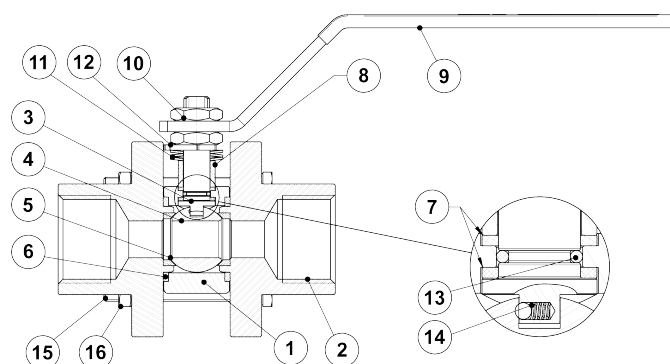
### CE MARKING – GROUP 2 (PED – European Directive)

| PN 100        | Category      |
|---------------|---------------|
| 1/2" to 11/4" | SEP           |
| 11/2" to 2"   | 1 (CE marked) |



| DIMENSIONS (mm) |     |     |     |     |    |             |
|-----------------|-----|-----|-----|-----|----|-------------|
| SIZE            | A   | B   | C   | E   | H  | WEIGHT (kg) |
| 1/2"            | 80  | 60  | 75  | 145 | 14 | 0,7         |
| 3/4"            | 95  | 80  | 85  | 185 | 20 | 1,4         |
| 1"              | 105 | 90  | 85  | 185 | 25 | 2,2         |
| 1 1/4"          | 120 | 110 | 100 | 270 | 32 | 3,3         |
| 1 1/2"          | 130 | 120 | 110 | 270 | 38 | 4,3         |
| 2"              | 145 | 130 | 115 | 270 | 48 | 7,3         |

| MATERIALS |                    |                   |
|-----------|--------------------|-------------------|
| POS. N°   | DESIGNATION        | MATERIAL          |
| 1         | Body               | A105 / 1.0432     |
| 2         | Body cap           | A105 / 1.0432     |
| 3         | Stem               | AISI 316 / 1.4401 |
| 4         | Ball               | AISI 304 / 1.4301 |
| 5         | * Seat             | PTFE/GR           |
| 6         | * Body gasket      | PTFE/GR           |
| 7         | * Stem gasket      | PTFE/GR           |
| 8         | Gland              | AISI 304 / 1.4301 |
| 9         | Lever              | Zinc plated steel |
| 10        | Gland nut          | Zinc plated steel |
| 11        | Washer springs     | Spring steel      |
| 12        | Stop plate         | Zinc plated steel |
| 13        | Stem o-ring        | Viton             |
| 14        | Anti-static device | AISI 304 / 1.4301 |
| 15        | Bolts              | Zinc plated steel |
| 16        | Nuts               | Zinc plated steel |



\* Available spare parts